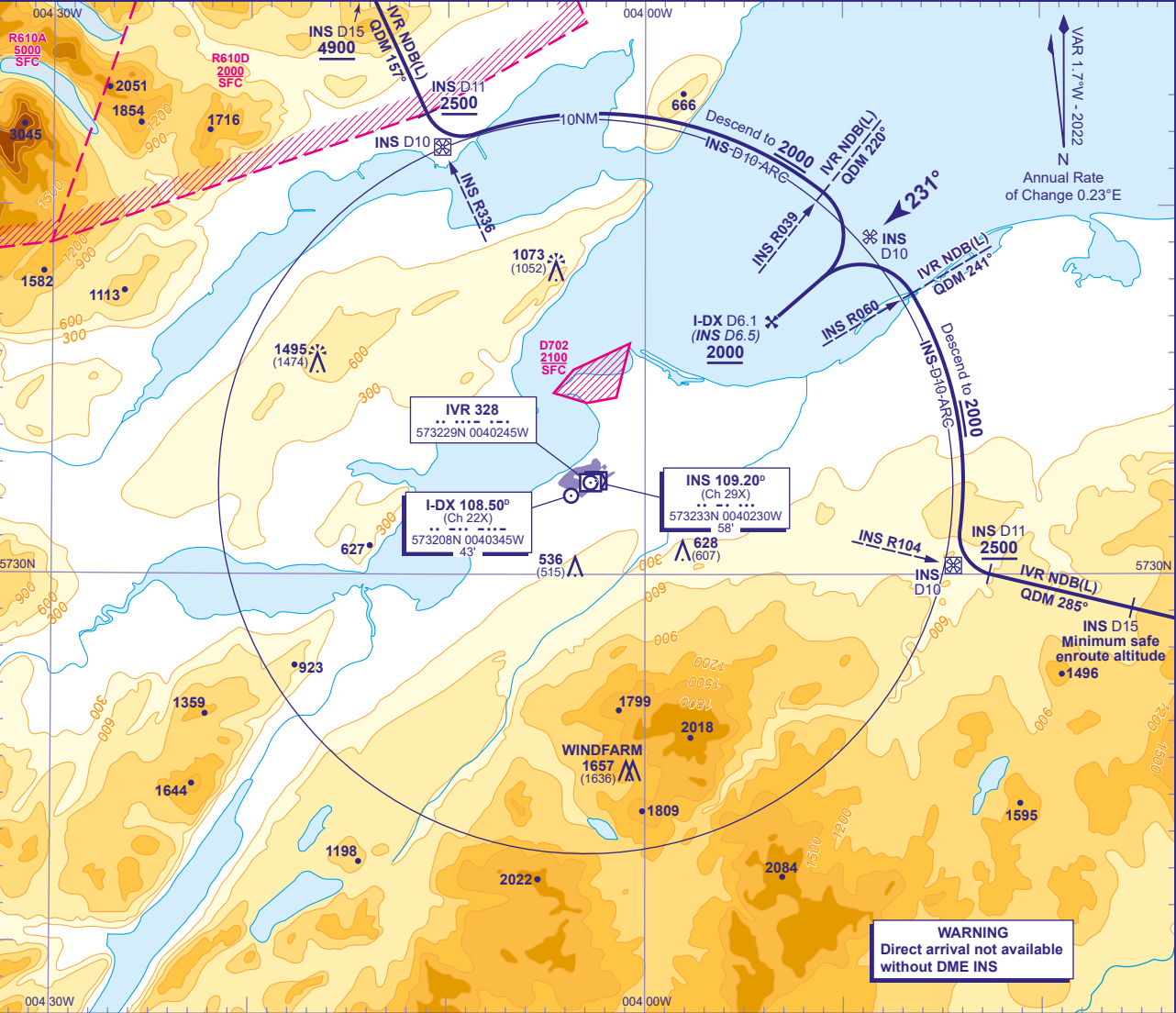


INSTRUMENT APPROACH CHART - ICAO

INVERNESS
Direct Arrivals
ILS/LOC/DME
RWY 23
(ACFT CAT A,B)

	TWR 118.405	INVERNESS TOWER	AD ELEVATION 31	Direct Arrivals ILS/LOC/DME RWY 23 (ACFT CAT A,B)
	RAD 122.605	INVERNESS RADAR	THR ELEVATION 21	
	ATIS 109.200	INVERNESS INFORMATION	OBSTACLE ELEVATION 1495 AMSL (1474) (ABOVE THR)	
			BEARINGS ARE MAGNETIC	
			TRANSITION ALTITUDE 3000	



Arriving direct from VOR/DME ADN
Arrival from VOR/DME ADN on VOR INS R104 (QDM 285°) **not below minimum safe enroute altitude**. Request ATC approval for DME arc arrival when within INS DME 40. After passing INS DME 25, with ATC approval, descend **not below 5600**. After passing INS DME 15 descend **not below 2500**. From INS DME 11 turn right to establish on INS DME 10 arc anticlockwise. When established, descend along the arc **not below 2000**. From lead radial VOR INS R060 (IVR NDB(L) QDM 241°), turn left onto localizer. From FAF I-DX DME 6.1 (INS DME 6.5) at **2000**(1979), continue with ILS/LOC/DME final approach.

Arriving on N560 Southbound
Arrival on N560 **not below 5000**. Request ATC approval for DME arc arrival when within INS DME 40. When approved, after passing **BONBY** (INS DME 23) descend **not below 4900**. Establish on INS R336 (QDM 157°) from INS DME 15, descend **not below 2500**. From INS DME 11 turn left to establish on INS DME 10 arc clockwise. When established, descend along the arc **not below 2000**(1979). From lead VOR INS R039 (IVR NDB(L) QDM 220°) turn right onto localizer. From FAF I-DX DME 6.1 (INS DME 6.5) at **2000**(1979), continue with ILS/LOC/DME final approach.